

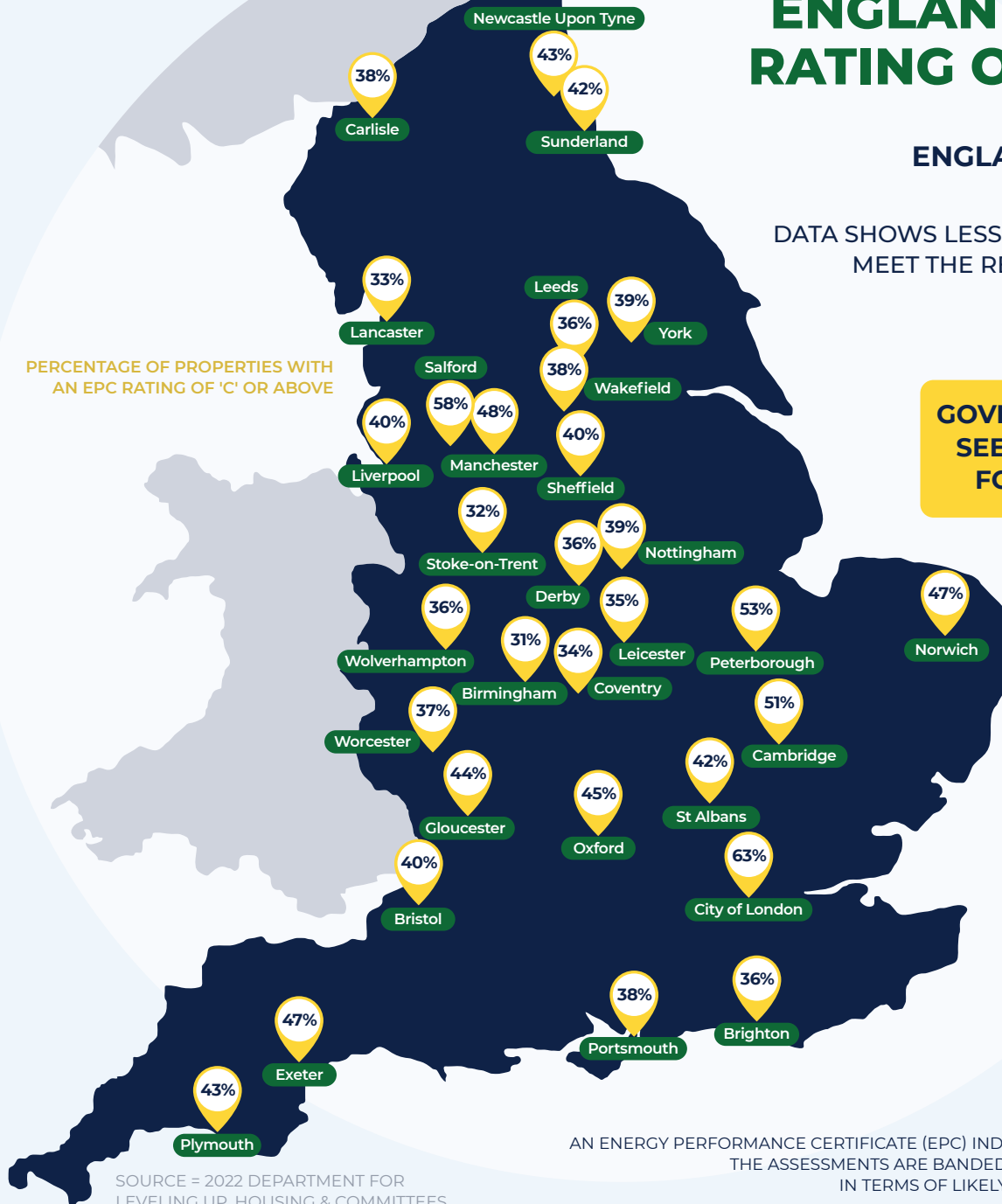
ONLY 40% OF HOMES IN ENGLAND HAVE AN EPC RATING OF 'C' OR ABOVE

ENGLAND'S EPC RATINGS PER CITY

DATA SHOWS LESS THAN 50% OF HOMES IN ENGLAND MEET THE RECOMMENDED ENERGY STANDARD (AN EPC RATING OF 'C')

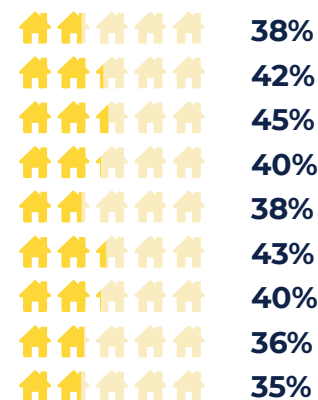
GOVERNMENT PROPOSALS WOULD SEE MANDATORY EPC 'C' RATING FOR NEW TENANCIES BY 2025

PERCENTAGE OF PROPERTIES WITH AN EPC RATING OF 'C' OR ABOVE



2022 ENGLAND AVERAGE: PERCENTAGE OF PROPERTIES WITH AN EPC BAND OF 'C' OR ABOVE

PERCENTAGE OF PROPERTIES WITH AN EPC RATING OF 'C' OR ABOVE



REGIONS

EAST MIDLANDS
EAST OF ENGLAND
LONDON
NORTH EAST
NORTH WEST
SOUTH EAST
SOUTH WEST
WEST MIDLANDS
YORKSHIRE AND THE HUMBER

AN ENERGY PERFORMANCE CERTIFICATE (EPC) INDICATES THE ENERGY EFFICIENCY OF A BUILDING. THE ASSESSMENTS ARE Banded FROM A TO G, WHERE A IS THE MOST EFFICIENT IN TERMS OF LIKELY FUEL COSTS AND CARBON DIOXIDE EMISSIONS.

SOURCE = 2022 DEPARTMENT FOR LEVELING UP, HOUSING & COMMITTEES

www.openpropertygroup.com